

Data tables: March 2012

Published May 2012

Introduction

The role of the Medical Board of Australia is to:

- register medical practitioners and medical students
- develop standards, codes and guidelines for the medical profession
- investigate notifications and complaints
- where necessary, conduct panel hearings and refer serious matters to Tribunal hearings
- assess International Medical Graduates who wish to practise in Australia
- approve accreditation standards and accredited courses of study

The Board's functions are supported by [Australian Health Practitioner Regulation Agency](http://www.ahpra.gov.au) (AHPRA). For information about legislation governing our operations see [AHPRA's Legislation & Publications](http://www.ahpra.gov.au/Legislation-and-Publications.aspx) at <http://www.ahpra.gov.au/Legislation-and-Publications.aspx>

The Board has analysed its registration data and produced a number of statistical breakdowns about registrants to share with the profession and community. The Board shares these statistics regularly.

For more information on medical registration, please see the Board's website: <http://www.medicalboard.gov.au/Registration.aspx>

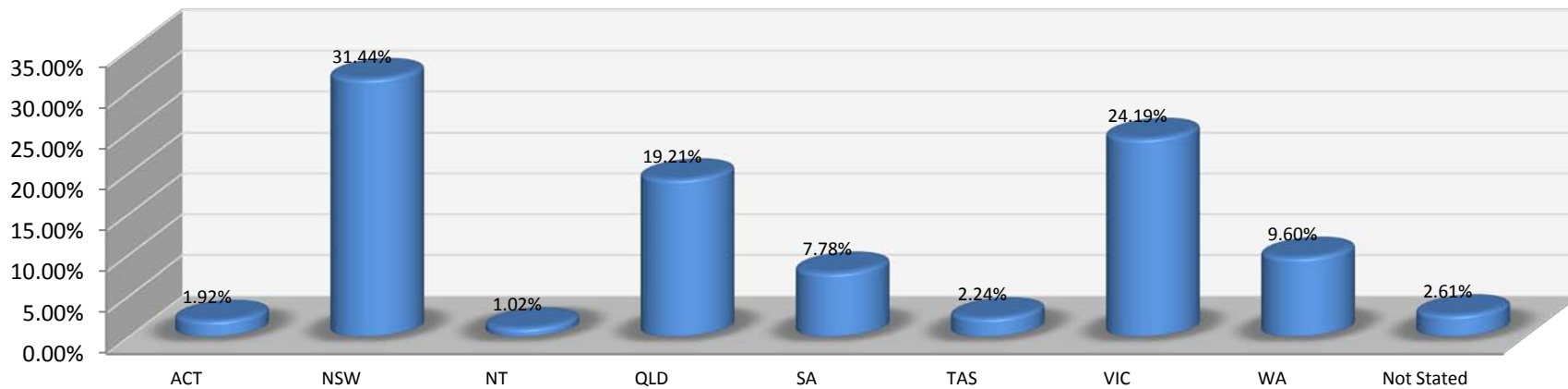
Index of Tables

Medical Practitioners: State/Territory by Registration type	2
Medical practitioners: Age by Registration Type	3
Medical practitioners: Gender by State/Territory by Registration Type	4
Medical Practitioners: Endorsement Type and by State/Territory	5

Medical Practitioners: State/Territory by Registration type

State	Provisional	General	General and Specialist	Specialist	Provisional and Specialist	Limited				Limited (Public Interest - Occasional Practice)	Non-practising	Total	% by State
						Area of need	Postgrad / training	Public Interest	Teaching / research				
ACT	77	520	859	115	1	19	85	1	1	46	33	1,757	1.92%
NSW	973	8,263	15,344	1,304		176	1,440	1	7	649	565	28,722	31.44%
NT	41	334	344	88		110	9				2	928	1.02%
QLD	736	5,452	8,189	1,620		930	227		6	177	211	17,548	19.21%
SA	269	1,934	3,862	381		118	415	1	1	2	124	7,107	7.78%
TAS	76	513	1,036	174		83	86	1	1	48	26	2,044	2.24%
VIC	764	6,356	11,929	1,219		279	1,037	4	5	7	499	22,099	24.19%
WA	310	2,344	3,907	821		713	173	6	3	301	189	8,767	9.60%
Not Stated		704	610	290		8	14			14	742	2,382	2.61%
Total	3,246	26,420	46,080	6,012	1	2,436	3,486	14	24	1,244	2,391	91,354	

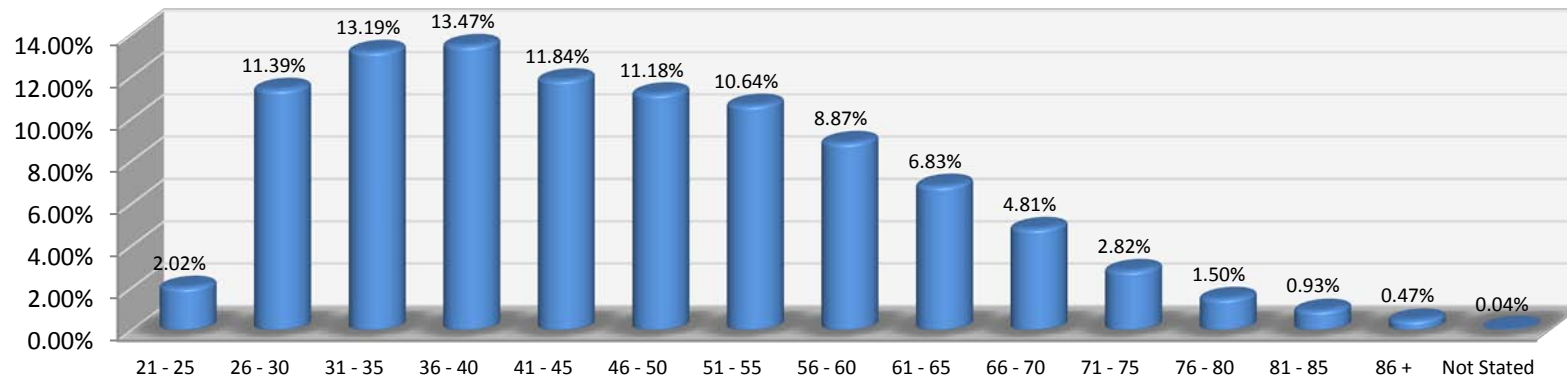
% By State



Medical practitioners: Age by Registration Type

Age Group	Provisional	General	General and Specialist	Specialist	Provisional and Specialist	Limited				Limited (Public Interest - Occasional Practice)	Non-practising	Total	% by Age Group
						Area of need	Postgrad / training	Public Interest	Teaching / research				
21 - 25	1,177	640				16	13					1,846	2.02%
26 - 30	1,390	7,620	38	19		595	694		2		46	10,404	11.39%
31 - 35	376	7,759	1,939	319		441	1,064			2	148	12,051	13.19%
36 - 40	156	3,901	5,597	967		450	979	1	6		4	12,306	13.47%
41 - 45	71	2,040	6,296	1,379		355	444	2	2		10	10,821	11.84%
46 - 50	57	1,455	6,726	1,317		247	180	2	3		10	10,211	11.18%
51 - 55	12	1,078	7,204	951	1	155	68			2	20	9,716	10.64%
56 - 60	7	726	6,457	568		87	25	2	3		29	8,100	8.87%
61 - 65		484	5,116	301		61	15	4	2		64	6,244	6.83%
66 - 70		309	3,521	125		23	3	3			203	4,400	4.81%
71 - 75		196	1,833	49		5					260	2,574	2.82%
76 - 80		101	813	11					1		254	1,367	1.50%
81 - 85		69	383	4		1					245	850	0.93%
86 +		37	134	1							142	428	0.47%
Not Stated		5	23	1			1				1	36	0.04%
Total	3,246	26,420	46,080	6,012	1	2,436	3,486	14	24	1,244	2,391	91,354	

% By Age Group



Medical practitioners: Gender by State/Territory by Registration Type

Sex	State	Provisional	General	General and Specialist	Specialist	Provisional and Specialist	Limited				Limited (Public Interest - Occasional Practice)	Non-practising	Total Count	% by Sex by State
							Area of need	Postgrad / training	Public Interest	Teaching / research				
Female	ACT	45	260	318	37	1	8	35		1	12	14	731	0.8%
	NSW	544	4,143	4,927	420		51	638			134	223	11,080	12.13%
	NT	25	193	151	29		44	3				1	446	0.49%
	QLD	389	2,510	2,657	503		375	88		1	23	79	6,625	7.25%
	SA	143	970	1,202	104		35	162		1		37	2,654	2.91%
	TAS	37	262	362	52		29	40		1	6	7	796	0.87%
	VIC	425	3,275	3,954	377		79	458	1	2		180	8,751	9.58%
	WA	178	1,220	1,254	258		322	65	3	2	52	74	3,428	3.75%
	Not Stated		262	169	73		3	6			4	275	792	0.87%
	Sub total		1,786	13,095	14,994	1,853	1	946	1,495	4	8	231	890	35,303
Male	ACT	32	260	541	78		11	50	1		34	19	1,026	1.12%
	NSW	428	4,120	10,416	883		125	801	1	7	515	342	17,638	19.31%
	NT	16	141	193	59		66	6				1	482	0.53%
	QLD	347	2,942	5,532	1,117		555	139		5	154	132	10,923	11.96%
	SA	126	959	2,660	277		83	253	1		2	87	4,448	4.87%
	TAS	39	251	674	122		54	46	1		42	19	1,248	1.37%
	VIC	339	3,080	7,975	842		200	577	3	3	7	319	13,345	14.61%
	WA	132	1,123	2,653	563		390	108	3	1	249	115	5,337	5.84%
	Not Stated		441	441	217		5	8			10	467	1,589	1.74%
	Sub total		1,459	13,317	31,085	4,158		1,489	1,988	10	16	1,013	1,501	56,036
Not Stated	NSW	1		1	1			1					4	0.0%
	SA		5										5	0.01%
	VIC		1					2					3	0.0%
	WA		1				1						2	0.0%
	Not Stated		1										1	0.0%
	Sub total		1	8	1	1		1	3					15
Total		3,246	26,420	46,080	6,012	1	2,436	3,486	14	24	1,244	2,391	91,354	

Medical Practitioners: Endorsement Type and by State/Territory

Endorsement	NT	QLD	TAS	VIC	WA	Total
Acupuncture	1	3	3	226	6	239
Total	1	3	3	226	6	239